

Project By:  
shantam  
group

Developers:  
**unique**  
VISION

Site : Shantam Nirvanta, Nr. Neelam Party Plot,  
Bh. Aditya Edifice, Chhani side Canal Rd,  
Vadodara, Gujarat-390024

Mob.: +91 7572 940 940  
Email: shantamnirvanta@gmail.com  
Website: www.shantamnirvanta.com

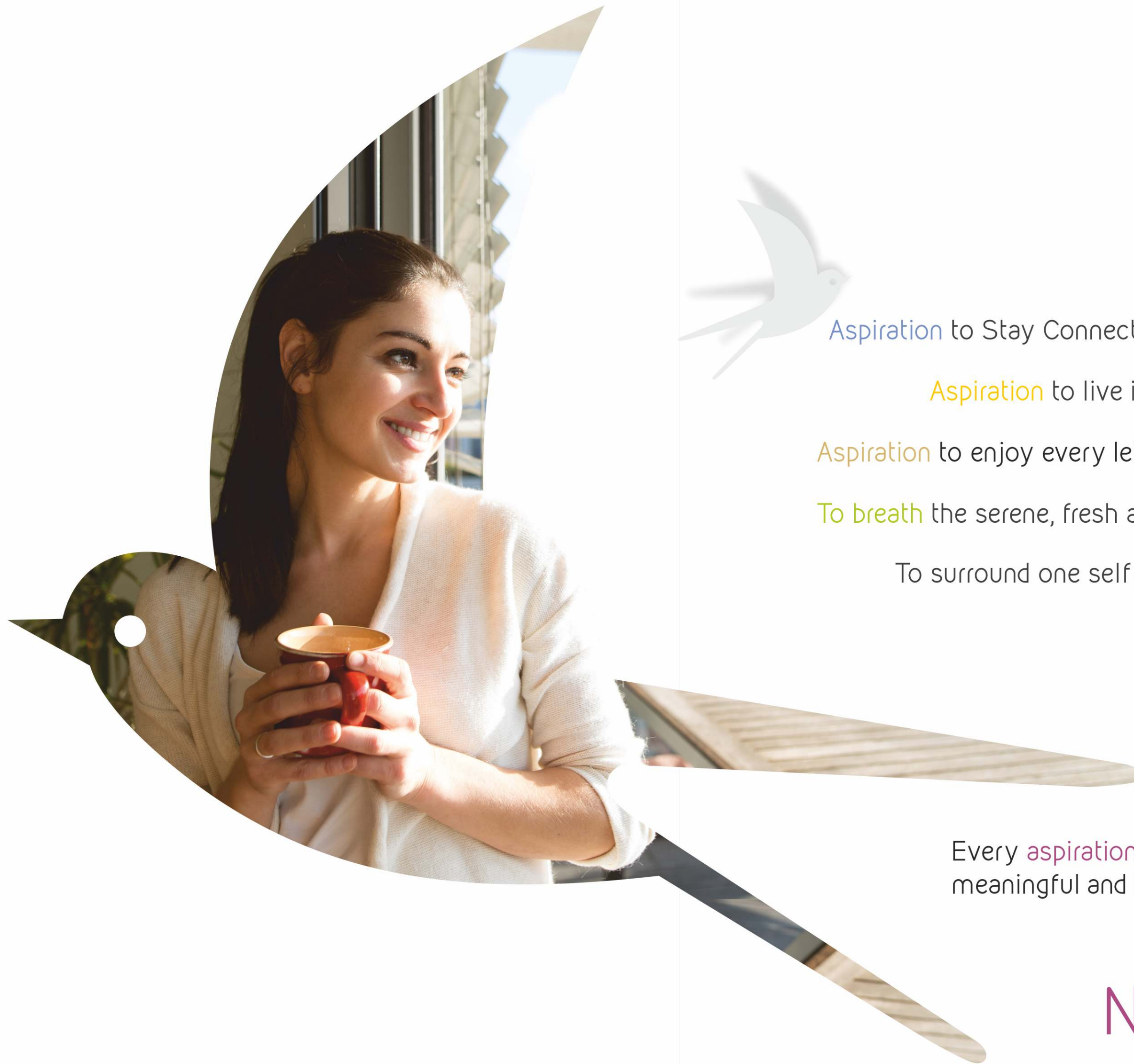
Architect:

  
Rishi  
Architect & Interior Designer  
Web.: rishiarchitect.com

Structure:

**ASHOK SHAH**  
& ASSOCIATES

shantam  
**Nirvanta**  
2 & 3 BHK PREMIUM FLATS



Aspiration to Stay Connected... 📍

Aspiration to live in luxuriance... 🛋️

Aspiration to enjoy every leisure... 🏡

To breath the serene, fresh air and 🌳

To surround one self with brilliance..

Every aspiration makes our life meaningful and beautiful at...

shantam  
**Nirvanta**  
2 & 3 BHK PREMIUM FLATS



shantam  
**Nirvanta**  
2 & 3 BHK PREMIUM FLATS

The beginning of  
**Aspirations**

There is a thin line between dreams and aspirations. While dreams stem from the heart, aspirations are rooted in the heart, as well as the mind. Aspirations shape our life and eventually the kind of lifestyle we would share with our loved ones. A simple aspiration of connecting with ourselves can open up a whole new world for you at Shantam Nirvanta.



Architect & Interior Designer

An iconic  
**Architecture**

Life at **Shantam Nirvanta** is about dwelling in a space that is perfectly aligned to discerning taste, as well as minutest requirement. An address that infuses a sense of belongingness and a dash of pride. A space of your own that you have always deserved. A landmark of luxury with an elevation that inspires awe every time you drive into its majestic premise. The premium amenities and attention to details ensure that your home isn't just an address, but an architectural marvel that you'd look up to.



Where your  
**Aspirations**  
finds new heights





Let your  
**Aspirations**  
inspire the rest



Time to take your



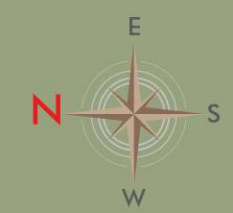
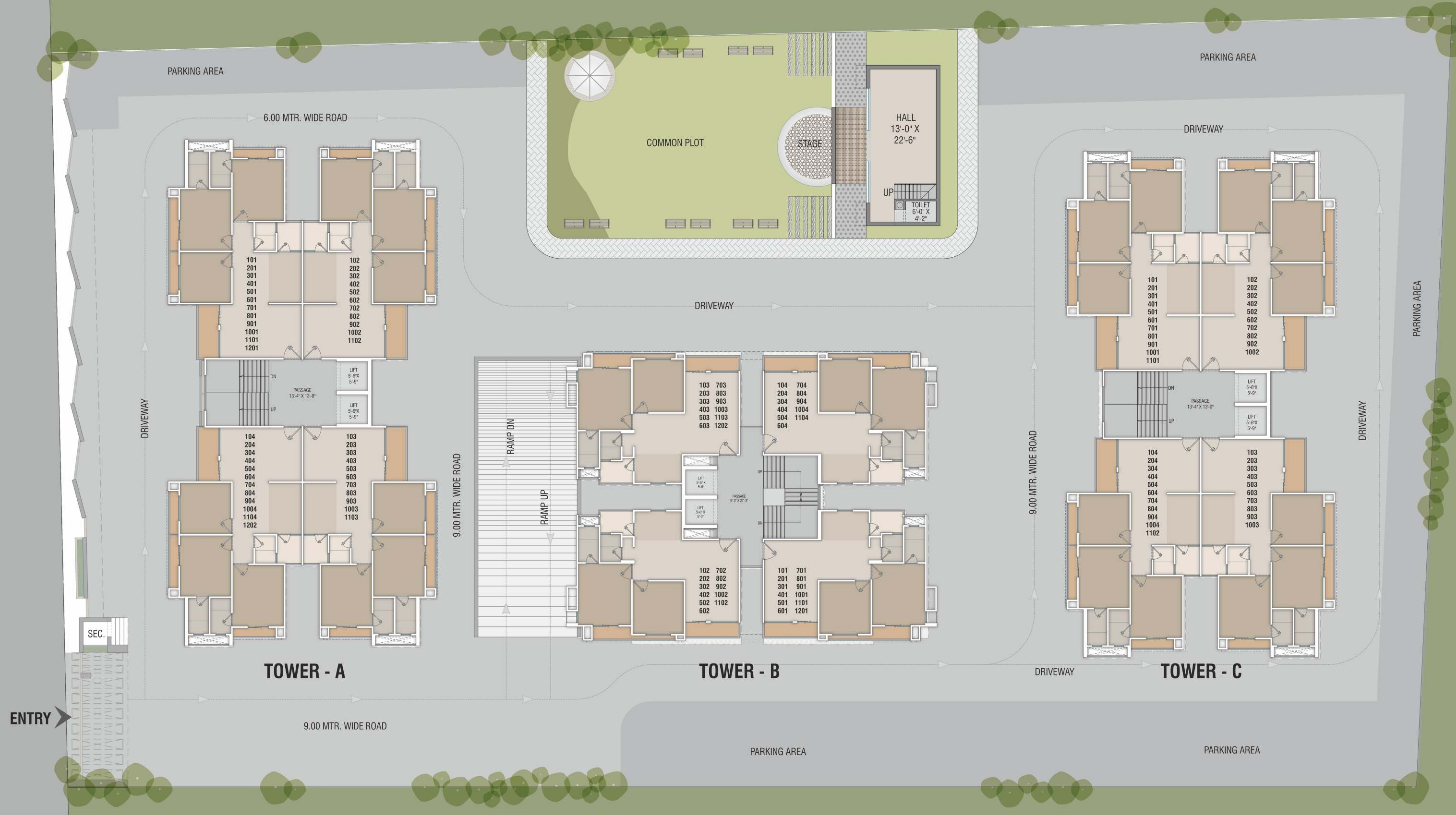
# Aspirations

to a whole new level



# Typical Layout Plan

18.00 MT. WIDE ROAD



# Tower-A&C

## 3 BHK

B.U.A. : 975 Sq. Ft.  
 Carpet Area: 860 Sq. Ft.



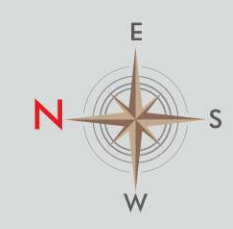
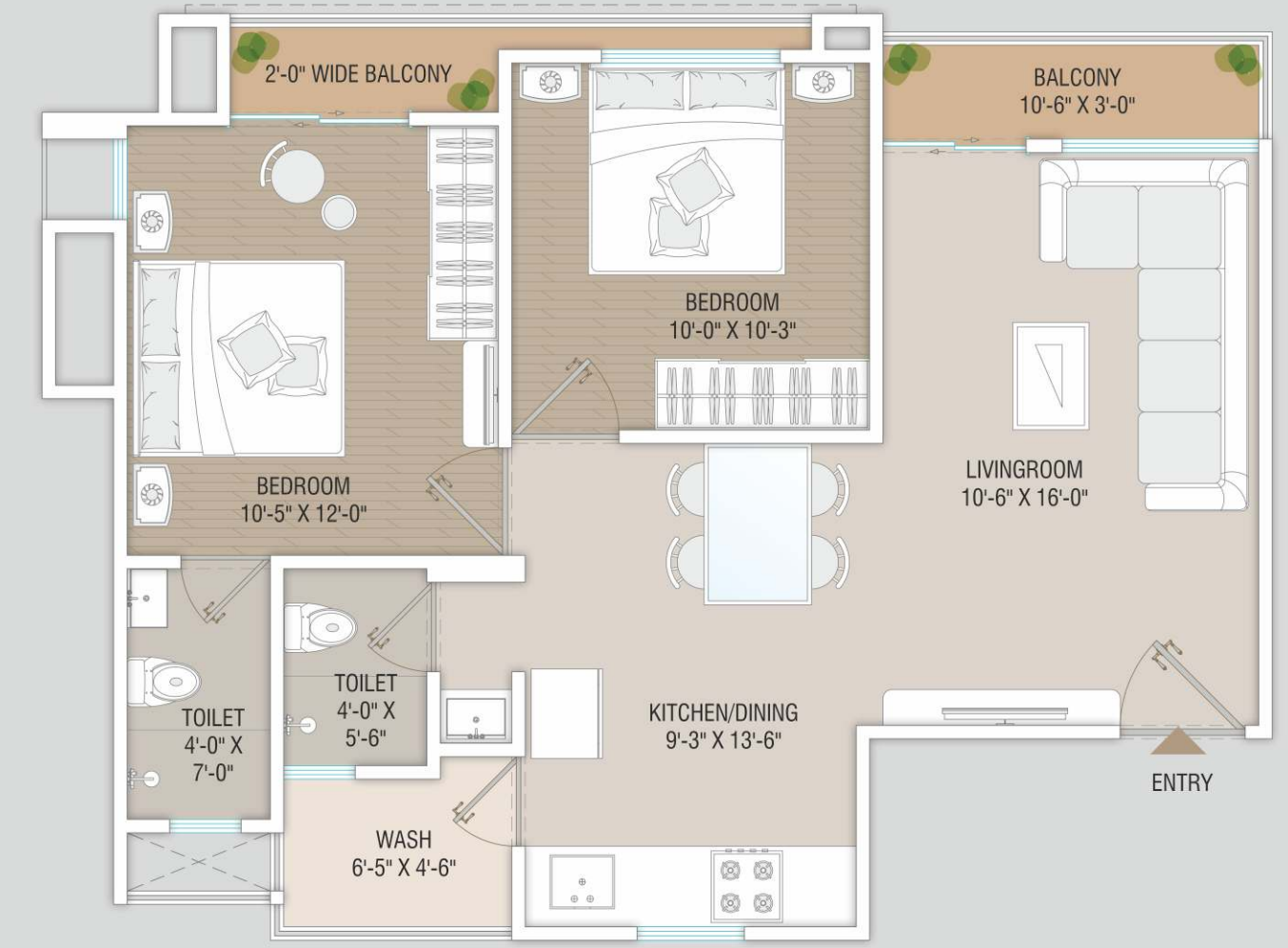
# Tower-B

## 2 BHK

B.U.A. : 775 Sq. Ft.  
 Carpet Area: 675 Sq. Ft.



# Unit Plan





## Valuable Amenities

- Elegant entrance gate with security cabin
- Water body in Main Entrance
- Water Harvesting
- 24 Hrs Water supply for under ground & overhead water tank with sensor
- Anti termite Treatment
- Alloted parking
- 24 Hours Security
- Entire Campus under CCTV camera surveillance
- Video door security system in each flat
- POP in Living & Dining Area
- R.O. system for each flat
- Electric Geyser in all bathrooms
- Standard quality lift
- Power back-up for Lift & Common area
- Landscape garden with children play equipment
- Underground cabling for esthetic look of the project
- RCC trimix road with designed street light poles
- Attractive name plate & letter box
- Brickbat water proofing treatment and china mosaic on terrace



## Amenities

-  AC Multipurpose Hall
-  AC Gymnasium
-  Indoor Game Room
-  Children's Play Area
-  Landscaped Garden
-  Senior Citizen Sitting Area
-  Yoga Zone
-  Open Air Theatre



## specification

### FLOORING

- Superior quality 32" x 32" Vitrified flooring
- Paver blocks in parking area

### KITCHEN

- Granite top platform with S.S. sink
- Decorative Glazed tiles dedo upto lintel level

### DOOR - WINDOWS

- Attractive main door in teak wood frame or equivalent
- Good quality flush door in all bedrooms & bathroom with laminates on both side
- Aluminum powder coating window
- Safety grill in window

### COLOUR

- Paint to exterior surface wall and putty finish with paint for internal wall surface.

### ELECTRIFICATION

- Concealed wiring of standard quality with modular switches
- T.V. point in Living room & Master bedrooms
- A.C. point in all bedrooms

### TOILET / PLUMBING

- Standard quality sanitary ware & branded quality plumbing fittings
- Decorative glazed tiles dedo upto lintel level with modern concept
- Ceramic tiles in flooring

